



E&V ID W-02XA01

IBIZA

Elegant ground floor apartment in Marina Botafoch

TOTAL SURFACE

approx. 65 m²

NUMBER OF BEDROOMS

1

TERRACE SIZE

approx. 8 m²

ASKING PRICE

€600,000



Property Details

Total Surface
approx. 65 m²

Asking price
€600,000

Flooring
Tiles, Carpet Tiles, Marble

Total Number of Parking Bays
1

Alarm system
✓

Terrace Size
approx. 8 m²

Total Number of Bathrooms
1

Laundry Room
Private, inside Apartment

Elevator
✓

Guest toilet
✓

Number of Bedrooms
1

Air-Condition
Ducted Air-conditioned, Split Air-conditioned

Last Modernisation / Restoration
2024

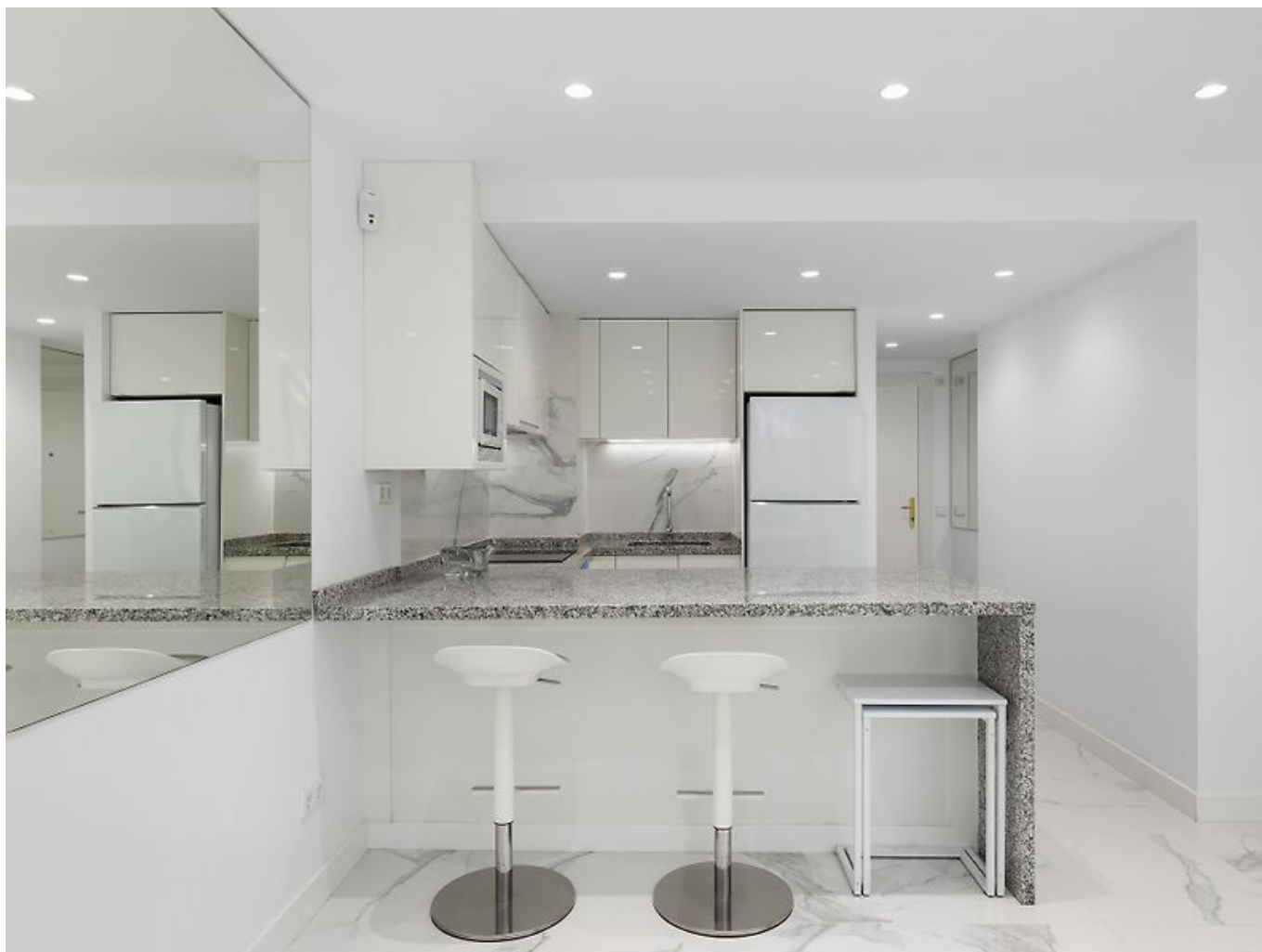
Views
Green View

Commission Text

Availability upon agreement.

Engel & Völkers does not accept responsibility as the information provided in this brochure is for information only and it is subject to errors, omissions, change of price or withdrawal without notice.

Taxes, notary and registry fees must be paid by purchaser, the commission to E&V paid by the seller as stipulated by Spanish regulations.



Property Description

Discover this fully renovated ground floor apartment in the heart of Marina Botafoch, offering a perfect blend of style, comfort, and functionality. Bathed in natural light, the interiors have been carefully designed to maximize space and create a warm, inviting atmosphere throughout.

The apartment comprises one spacious bedroom with an en-suite bathroom, along with an additional guest bathroom for convenience. A modern, fully fitted kitchen provides both practicality and elegance, making it ideal for contemporary living. The property also features air conditioning and a private terrace,

ensuring year-round comfort and the opportunity to enjoy outdoor living.

Located within a well-maintained building that offers the added benefit of a concierge service, residents can enjoy both security and peace of mind. A private parking space is included, adding further value to this property.

This apartment is the perfect choice for those seeking a bright, stylish, and highly functional home in one of the most desirable areas of the city.



Location Description

Marina Botafoch is one of Ibiza's most prestigious areas, just a 10-minute walk from Ibiza Town and a 15-minute drive from the airport. Known for its luxury lifestyle, this area offers stunning views of Dalt Vila and the Mediterranean Sea. It's a hub for high-end boutiques,

gourmet restaurants and iconic clubs. Talamanca Beach is nearby, and the Marina itself is perfect for yachting enthusiasts. While it's a vibrant area full of energy, it's still within easy reach of quieter spots around the island, offering a dynamic yet accessible lifestyle.







ESCALA DE LA CALIFICACIÓN ENERGÉTICA

Consumo de energía
kW h / m² año

Emisiones
kg CO₂ / m² año

| | | |
|--------------------------|-------|------|
| A más eficiente | | |
| B | | |
| C | | |
| D | | |
| E | | |
| F | 161,9 | 50,8 |
| G menos eficiente | | |

Important Notice

In compliance with the current Personal Data Protection Law, we inform you that your personal data were included in an automated file owned by Engel & Völkers Ibiza, S.L., with CIF B57138182 and fiscal address at Avda. Santa Eulalia, 17 bajos, 07800 Ibiza, Spain, to attend to the commitments derived from the relationship between the two parties. Engel & Völkers Ibiza, S.L. informs that all data will be handled lawfully, loyally transparently, appropriately, suitably, with restrictions, precisely and kept up to date. You may exercise your right to access, rectify, limit treatment, supress, withdraw and oppose to your personal data treatment, as well as the consent provided for its treatment by sending your request by email to Ibiza@engelvoelkers.com.

